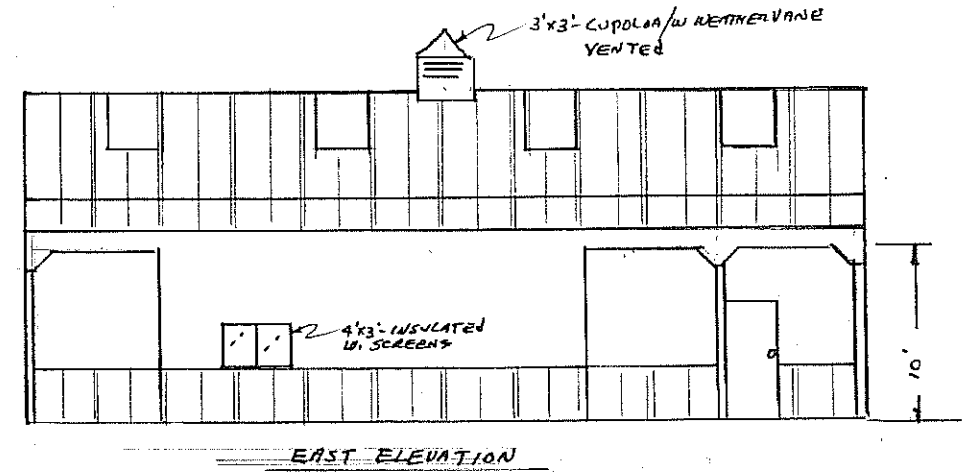
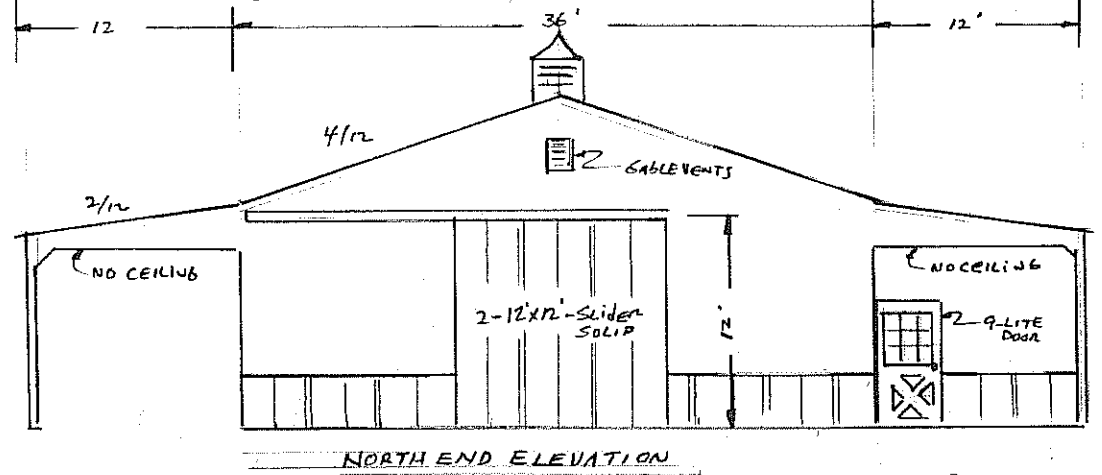
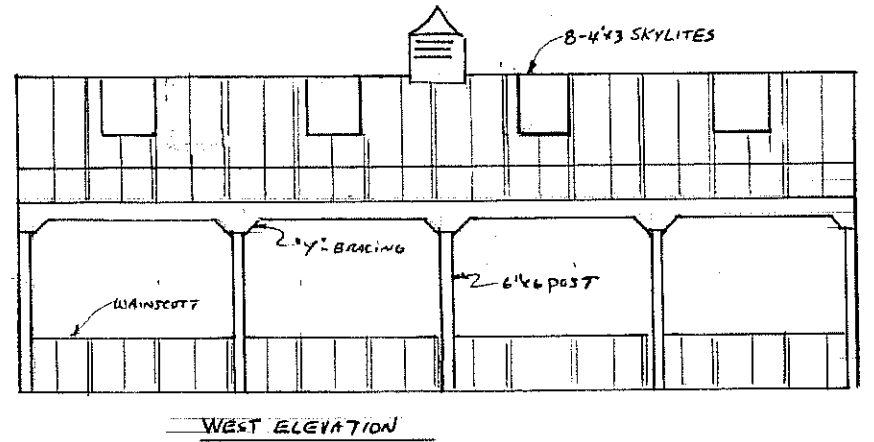


- DOOR SCHEDULE
 2-12'x12'- END SLING DOORS - SOLID
 1-3'-9 LITE
 1-3'- SOLID DOOR
- WINDOW SCHEDULE
 2-4'x3'- INSULATE
- STALLS BY PLYCO
 12'x12'- 5'-2 1/2" T&L WITH 4'- GAL. BARS
 4'x7'- SLIDING DOOR - 3 REQUIRED
- WASH BAY - 12'x12'x8'-TALL
 3-SIDED METAL LINER



BY: BLITZ BUILDERS FOR: KEN & CYNTHIA HILL DRAWN BY: JWE