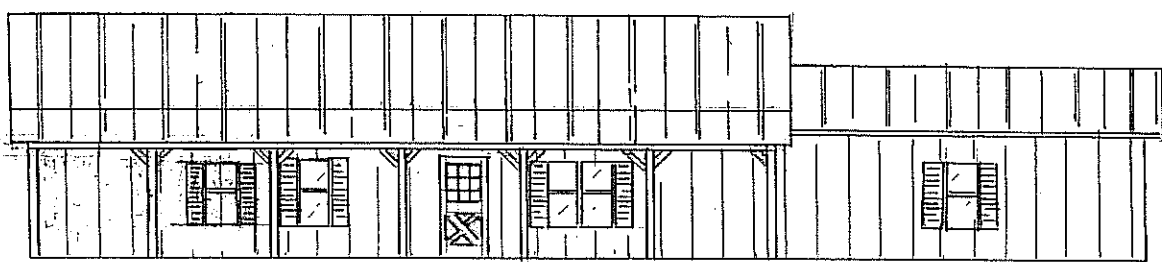
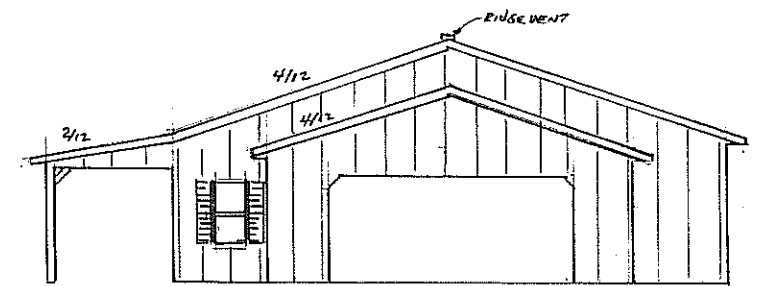


- DOOR SCHEDULE
- 2-D1 = 3'x7' LITE
 - 1-D2 = 3'x7' SOLID, STEEL DOOR INS.
 - 6-D1 = 3'x7' INTERIOR DOOR (OPTIONAL)
 - 1-D2 = 2'x7' INTERIOR DOOR (OPTIONAL)
- WINDOW SCHEDULE
- 8-WL 2'x4" - INSULATED, SINGLE HUNG, WITH GRIDS (OPTIONAL)
 - 2-WI 2'x3" " " " " " "
 - 5-SET SHUTTERS
- TRUSS
- TRUSS - 2" O.C. - HOUSE TRUSS
 - GARAGE TRUSS, 8" O.C.
- OTHER SPECIFICATIONS
- 2"x4" - OUTSIDE STUD WALL - 24" O.C. - 9' TALL (OPTIONAL)
 - 2"x4" - INTERIOR STUD WALL - 16" O.C. - 9' TALL (OPTIONAL)
 - VAPOR BARRIER - ROOF ONLY
 - 6" O.R. 4" SIDEWALL INSULATION (OPTIONAL)
 - 6" TO 12" INSULATION - CEILING (OPTIONAL)
 - 4" 10" RIDGE VENTS
 - 2" GABLE VENTS
 - 3"x3" CUPOLA (OPTIONAL)
 - BUILDING ANCHORED TO CUSTOMER'S CONCRETE
 - 8" PORCH 48" LONG WITH "Y" BRACING, CEILING OPTIONAL



FRONT ELEVATION



RIGHT SIDE ELEVATION

BLITZ BUILDERS RANCH HOME #RH26